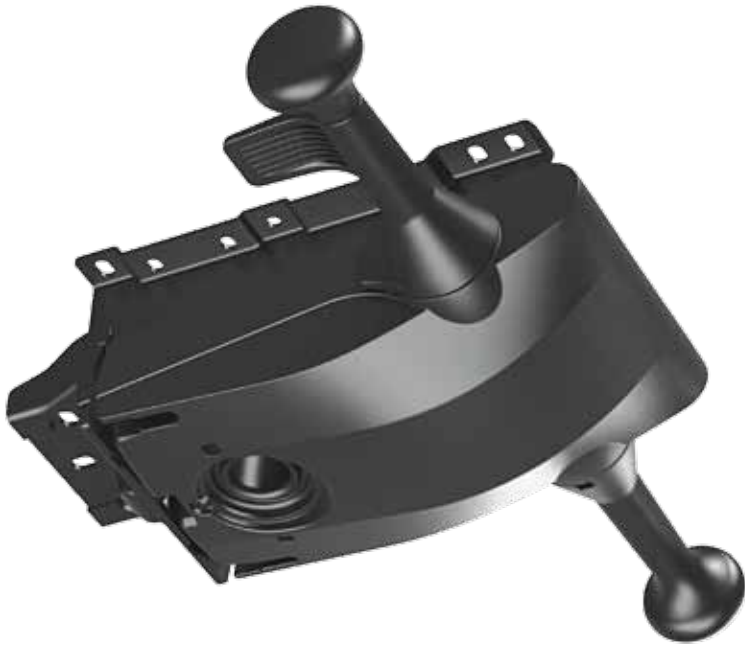
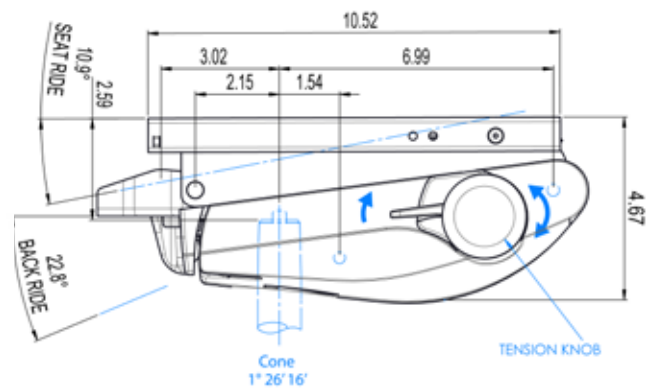
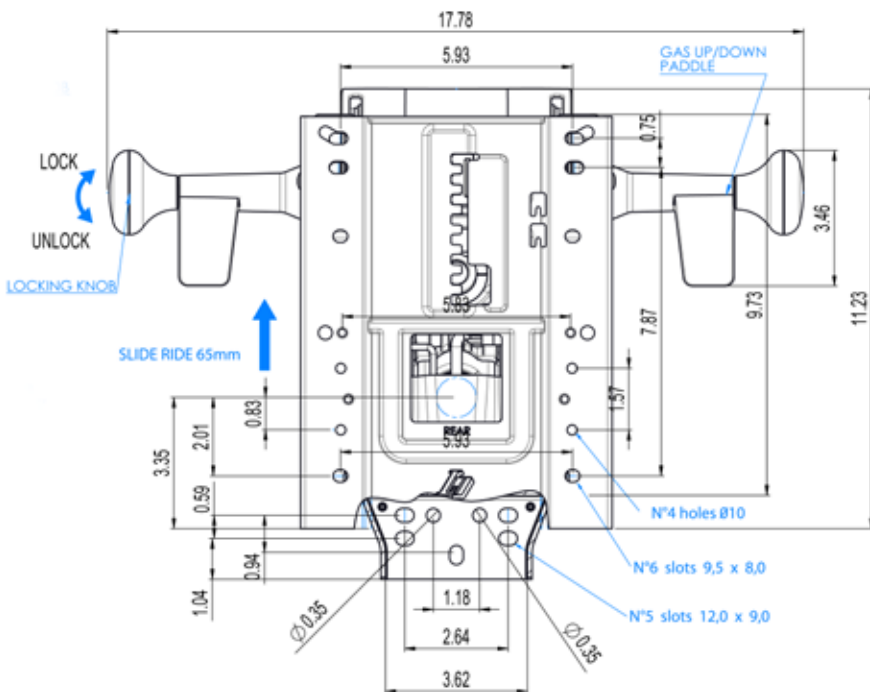


LP11 Quick-Adjust Synchro



The LP11 is a synchronized mechanism with forward fulcrum and side-accessible quick-adjust tension. The mechanism has been designed to accommodate a variety of torque requirements while maintaining support throughout the travel range, thus satisfying a broad range of users. The full tension range from minimum to maximum is easily managed with less than one complete turn of the side-activated tension knob. All mechanism control handles are within easy reach of the chair user.

Features include a quick-adjust tension, 5-position tilt lock with anti-kickback safety feature, and gas-lift chair-height adjustment. The mechanism is supplied with KD levers and a housing cover to allow maximum packaging density. The KD handles and mechanism cover are easily assembled using a quick coupling system. Designed to satisfy critical demands for robustness and reliability, the LP11 mechanism complies with demanding test standards of the industry.



Pivot	Back Travel	Seat Travel	Seat/Back Recline Ratio
Synchro	23°	11°	2 to 1

