



LP-24

SELF-WEIGHING SYNCHRO

Leggett & Platt
WORK FURNITURE

LP-24 | SELF-WEIGHING SYNCHRO



- 1. Back lock
- 2. Seat height adjustment

FEATURES

- Self-weighing synchro mechanism
- Thin profile supports variety of designs and maximizes seat height range
- Cable or handle activation
- Factory initial setting of the spring to adapt to different chair sizes and tension specifications
- 3 locking positions
- Height adjustment and tilt lock in one single bifunctional lever
- Bolt-on seat depth adjustment eliminates need for two separate mechanism models

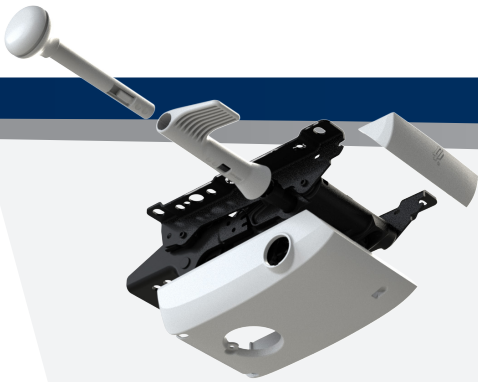
OPTIONS

- Tension fine tuning knob
- Integrated forward seating device (negative tilt) 5° of seat support
- Optional 4-position back lock
- 5-position seat slider kit with 70 mm (2.8 in) travel
- Side rails for LP-52 structural seat mounting
- Side rails with integrated cable activation
- Seat slider kit with integrated cable activation
- Integration with the LP-50 Quick Attach Back System

CUSTOMIZATION CHOICES

- Custom factory pre-set tension adjustment
- Bespoke back option for integrated back attachment
- Custom-designed handles
- Custom-designed covers and colors
- Custom-designed cable controls

CUSTOMIZATION



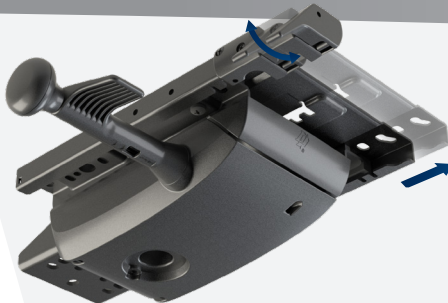
- The LP-24 mechanism design allows clients to differentiate their products through the use of the unique quick-coupling system
- This system seamlessly supports custom handles and covers, providing an endless range of aesthetic and functional choices without the expense and complexity of multiple mechanisms

TENSION



- While the LP-24 instantly provides a supportive experience for each user, the optional fine tuning knob allows the user to easily adjust the recline tension to their preference
- Adjustable tension ranges from min to max in 10 knob turns
- Provides optimal recline experience for users weighing 50 to 120 kg (110 to 264 lb)

SEAT DEPTH KIT



- The optional seat slider kit mounts directly to the standard LP-24, eliminating the need to inventory two mechanism variants
- 72 mm (2.8 in) seat depth adjustment with the ability to limit the ride to 50 mm (2 in)
- 8 depth positions
- 10 mm (0.4 in) in height
- Factory mounted on request

BESPOKE BACK ATTACHMENT



- LP-24's ability to integrate with a customer's custom back upright ensures visual continuity between the mechanism and the back design

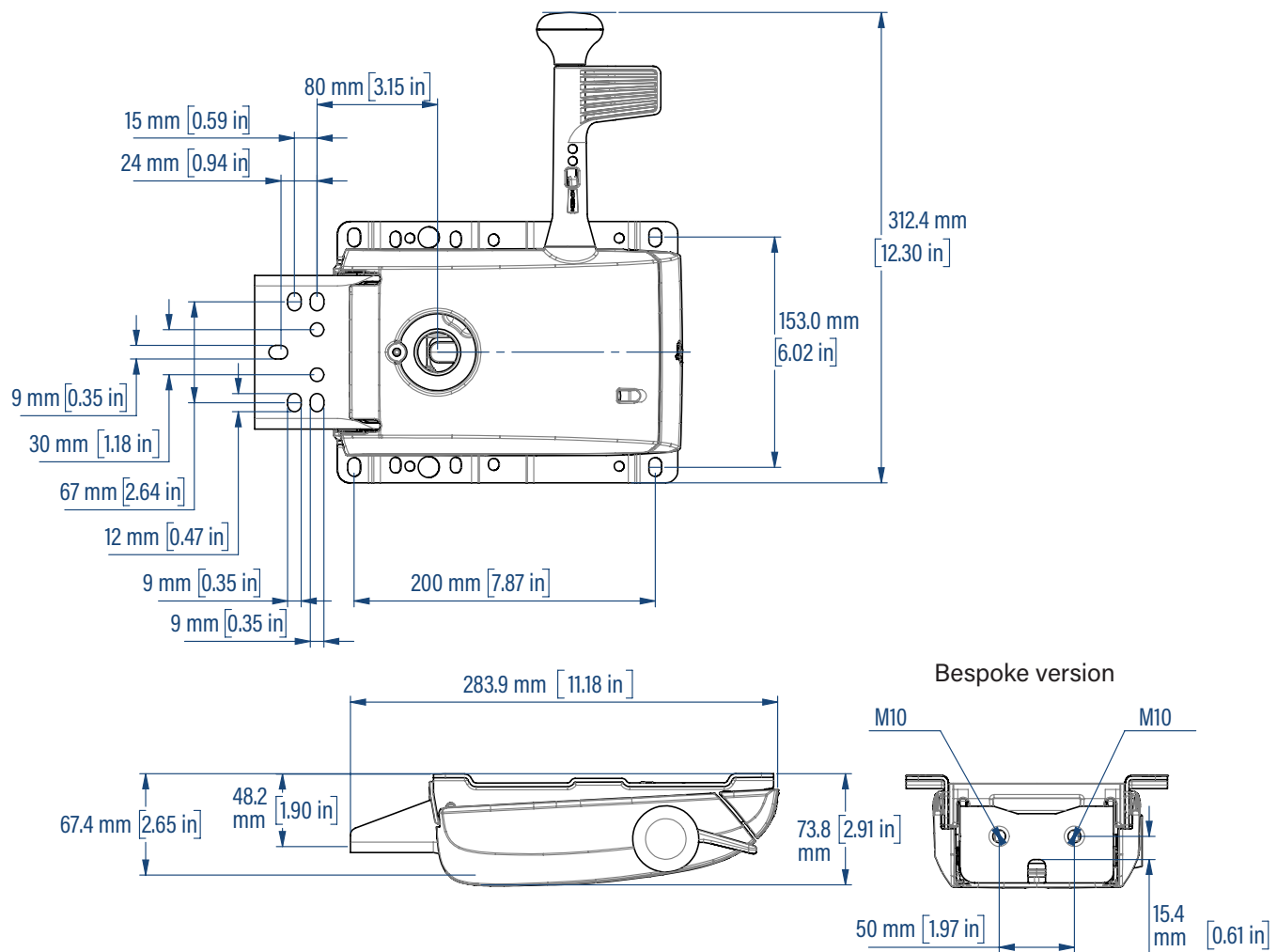
CABLE CONTROL INTEGRATION

- The optional cable control system creates a clean, simplified aesthetic by concealing the mechanism within the seat pan
- Ideal for fully upholstered chairs in multi-purpose, conference, executive, or home office applications



LP-24 | SELF-WEIGHING SYNCHRO

TECHNICAL DATA SHEET



PACKAGING

LP-24 STANDARD J-BAR

Pieces per Palletized Carton: 171
Weight per Piece: 2.3 kg (5.1 lb)
Approx. Palletized Carton Weight: 432 kg (952.4 lb)
Dimensions: 122 cm (48 in) x 106 cm (41.7 in)
x 106 cm (41.7 in) H

LP-24 BESPOKE BACK ATTACHMENT

Pieces per Palletized Carton: 190
Weight per Piece: 2.23 kg (4.9 lb)
Approx. Palletized Carton Weight: 432 kg (1018.5 lb)
Dimensions: 122 cm (48 in) x 106 cm (41.7 in)
x 106 cm (41.7 in) H

L&P WFG reserves the right to make modifications, at any moment, without prior notification, to the technical characteristics of standard models.