

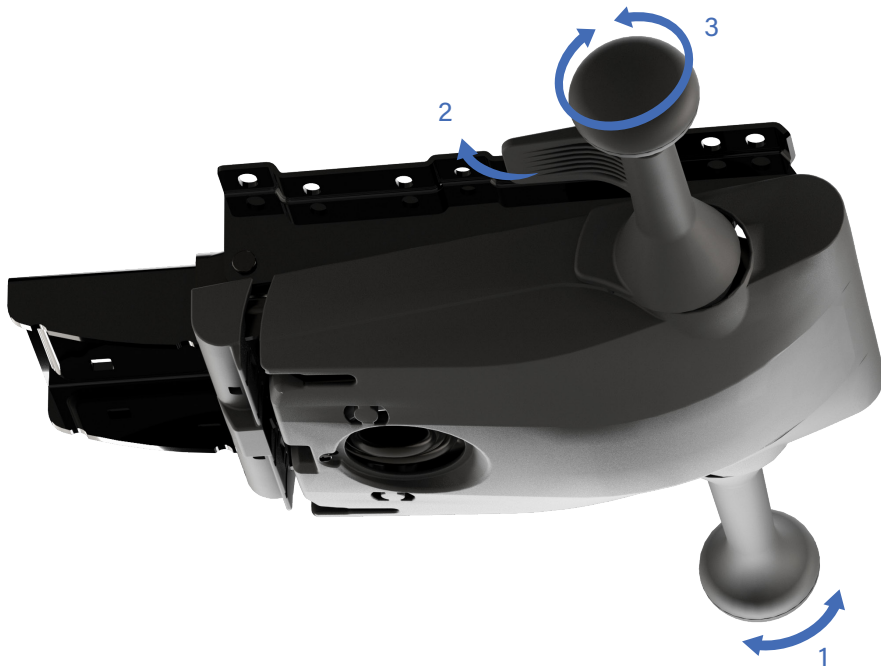


# LP-11 HD

## HEAVY DUTY QUICK ADJUST SYNCHRO

*Leggett & Platt*  
WORK FURNITURE

# LP-11 HD | HEAVY DUTY QUICK ADJUST SYNCHRO



The **LP-11 HD** is a “heavy duty” version of the LP-11, a synchro mechanism with side-accessible Quick Adjust tension. This LP-11 version supports an even higher range of users while still maintaining a constant tension throughout the range of travel.

1. Back lock
2. Seat height adjustment
3. Tension adjustment

## FEATURES

- Synchro mechanism with 1-turn Quick Adjust tension
- 2:1 back-to-seat ratio
- 5 tilt lock positions with anti-kickback
- 23° backrest recline angle
- 11° seat recline angle
- Higher tension range comfortably supports users weighing 75 to 155 kg (165 to 342 lb)
- Cable or handle activation
- Can ship with knocked-down quick attach levers and cover
- Bolt on seat depth adjustment eliminates need for two separate mechanism models
- Seat height adjustment

## OPTIONS

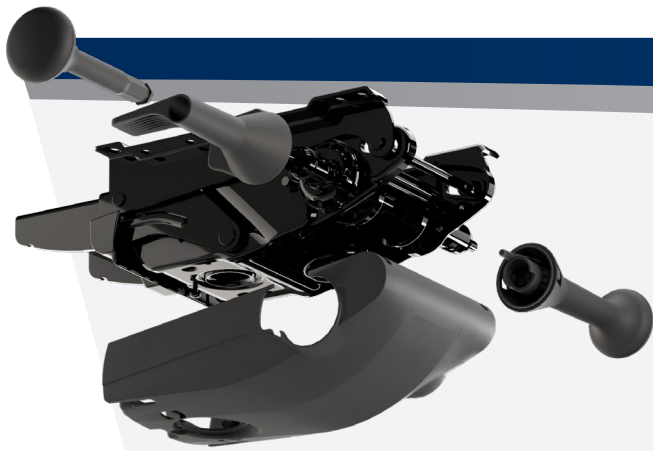
- 6-position seat slider kit with 72 mm (2.8 in) of travel; ability to limit to 50 mm (2.0 in); 62 mm (2.4 in) travel available
- Compatible with LP-50 Quick Attach Back System
- Side rails for LP-52 structural seat mounting
- Cable control integration including side rails and seat slider kit
- Shipping with or without handles and covers attached

## CUSTOMIZATIONS

- Bespoke back option for integrated back attachment
- Custom-designed handles and colors
- Custom-designed covers and colors
- Custom-designed cable controls



## CUSTOMIZATION



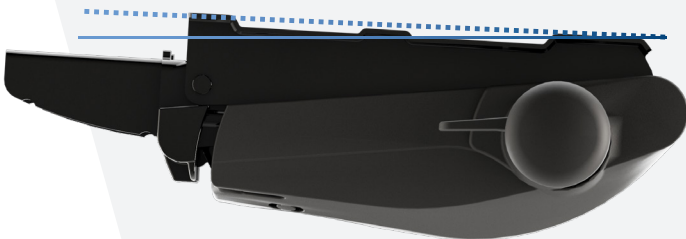
- The LP-11 HD design allows clients to differentiate their products through custom handles and covers, supporting a variety of aesthetics from one mechanism platform
- The LP-11 HD mechanism can be supplied with detached levers and housing cover to provide maximum packaging density and to minimize inventory
- The handles and cover are easily assembled using a quick coupling system

## SEAT DEPTH ADJUSTMENT



- Optional seat slider kit provides 72 mm (2.8 in) seat depth adjustment with the possibility to limit the ride to 50 mm (2.0 in); 62 mm (2.4 in) travel is also available
- 6 positions of adjustment
- Activation made by integrated lever
- 10 mm (0.39 in) in height

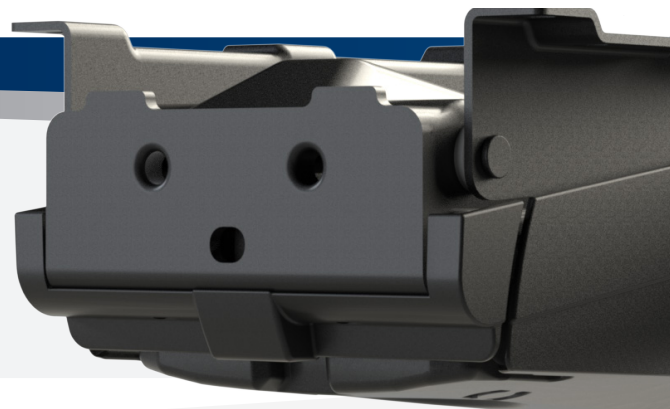
## FORWARD SEATING (Negative Tilt)



- An integrated 3 positions locking knob allows the user to select "forward working position" at  $-3^\circ$  for seat and  $-6^\circ$  for back or the normal  $0^\circ$  at rest position
- As an option on demand there is the possibility to have forward seating with  $-5^\circ$  for the seat and  $-6^\circ$  for the seat

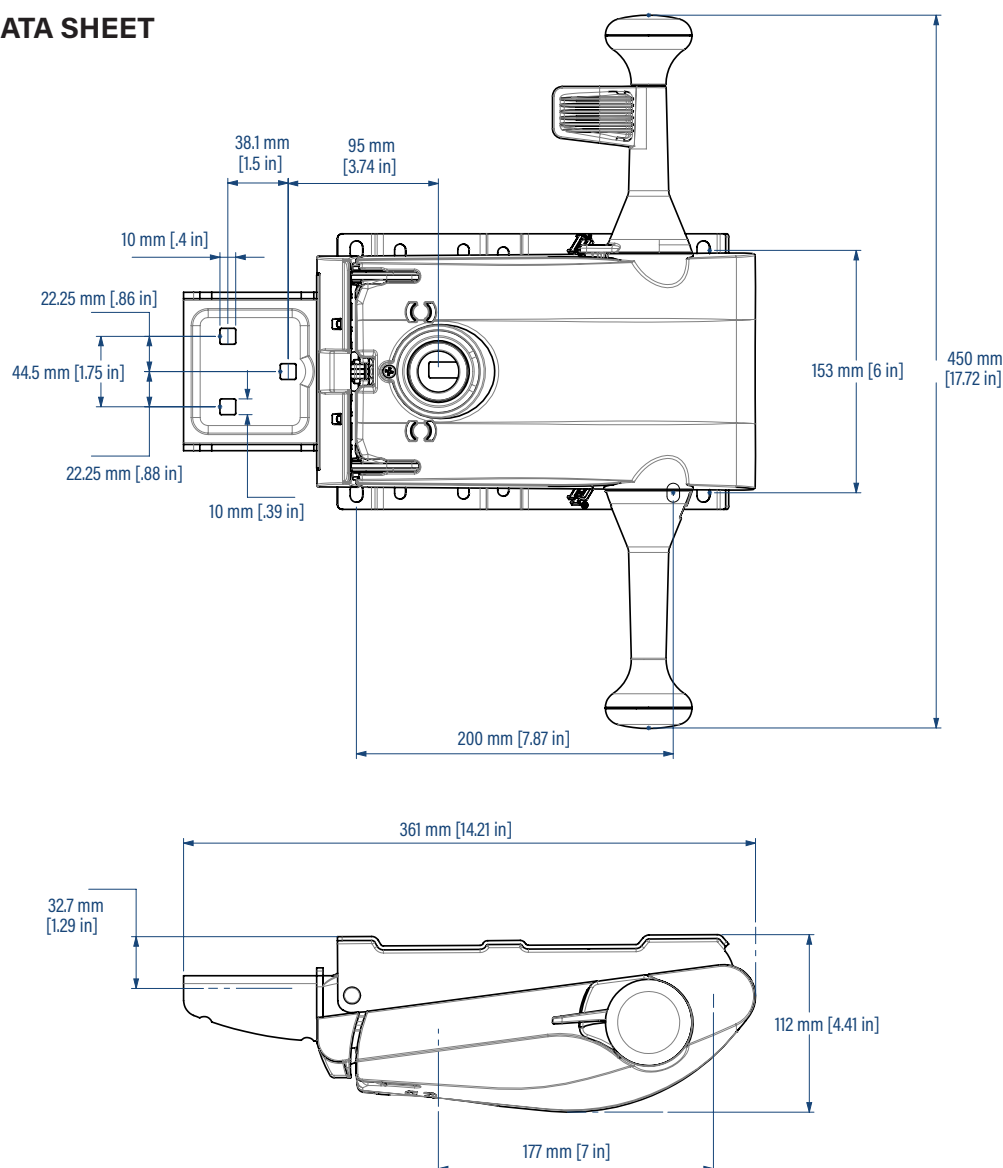
## BESPOKE BACK ATTACHMENT

- LP-11 HD's ability to integrate with a customer's custom back upright ensures visual continuity between the mechanism and the back design.



# LP-11 HD | HEAVY DUTY QUICK ADJUST SYNCHRO

## TECHNICAL DATA SHEET



## PACKAGING

### LP-11 HD STANDARD

Pieces per palletized carton: 98  
Weight per piece: 5.1 kg (11.2 lb)  
Approx. palletized carton weight: 615 kg (1195 lb)  
Dimensions: 122 cm (48 in) x 106 cm (41.7 in)  
x 110 cm (43.3 in) H

### LP-11 HD STANDARD AND SSM

Pieces per palletized carton: 85  
Weight per piece: 6.1 kg (13.4 lb)  
Approx. palletized carton weight: 562 kg (1239 lb)  
Dimensions: 122 cm (48 in) x 106 cm (41.7 in) x 110 cm (43.3 in) H