

Self-Weighing Mechanism System



GORDON

comfort | performance | design



1 Seat Height Adjustment

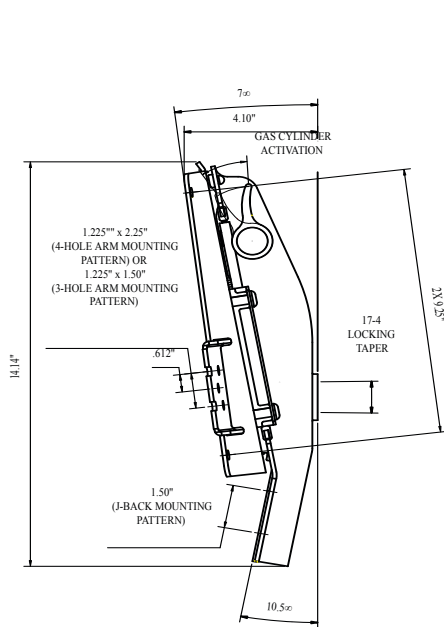
2 Mechanism Lock

A breakthrough Self-Weighing Mechanism System, intuitively responds to torque requirements covering a wide range of users without the need for manual tension adjustment. The patented linked-motion configuration drives the reclining action by mechanically connecting the seat and chair back through an ergonomically positioned hip pivot design.

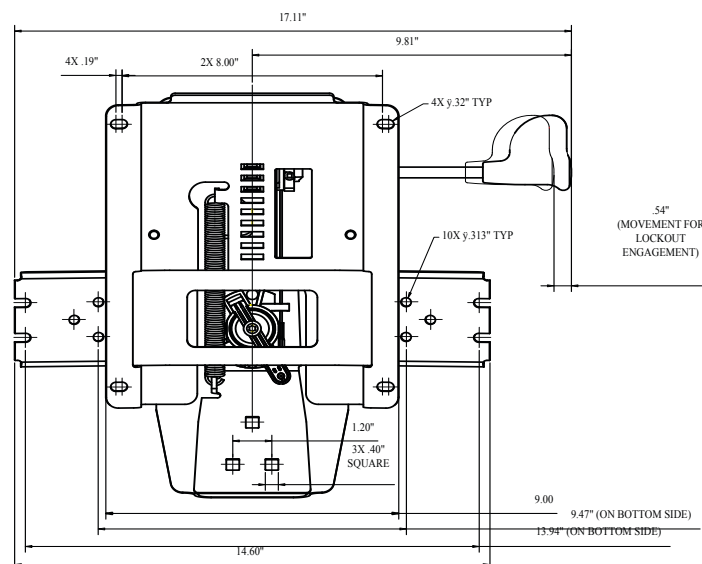
Ergonomic highlights:

- Vision and reach zones are minimized as user reclines

- Geometry allows users to recline while pulled up close to, or under, work surfaces. Full continuous support of seat, back and lumbar throughout the entire range of motion.
- Recline action centrally positions weight over chair base throughout entire travel range.
- Passive ergonomic function enhances multi-use seating applications.



5800
REACT



Leggett & Platt
INCORPORATED

10521_LP_6/11 © 2011 Leggett & Platt, Incorporated

Pivot	Seat Slide Travel
Self-Weighing	2.4" Max