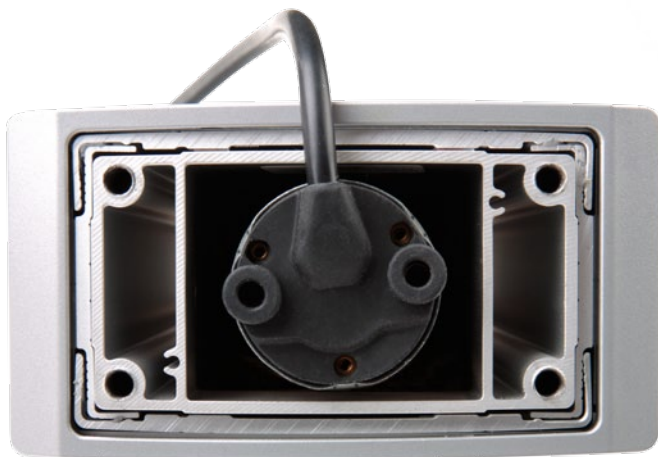


LEGS and ACTUATION

SHIFT™ adjustable-height tables combine unique, sustainable materials with expert design for a state-of-the-art column-and-drive system. Our anodized aluminum column design features a durable four-piece construction using military-vehicle adhesives to create rich, clean lines without holes, crimp marks, or weld splatter.

Anodized aluminum provides a level of durability and environmental responsibility superior to most other materials. Our aluminum columns are corrosion-resistant, abrasion resistant, and cannot chip, flake, or peel. The protective layer of oxide created from anodizing contains self-healing properties if cut or scratched.

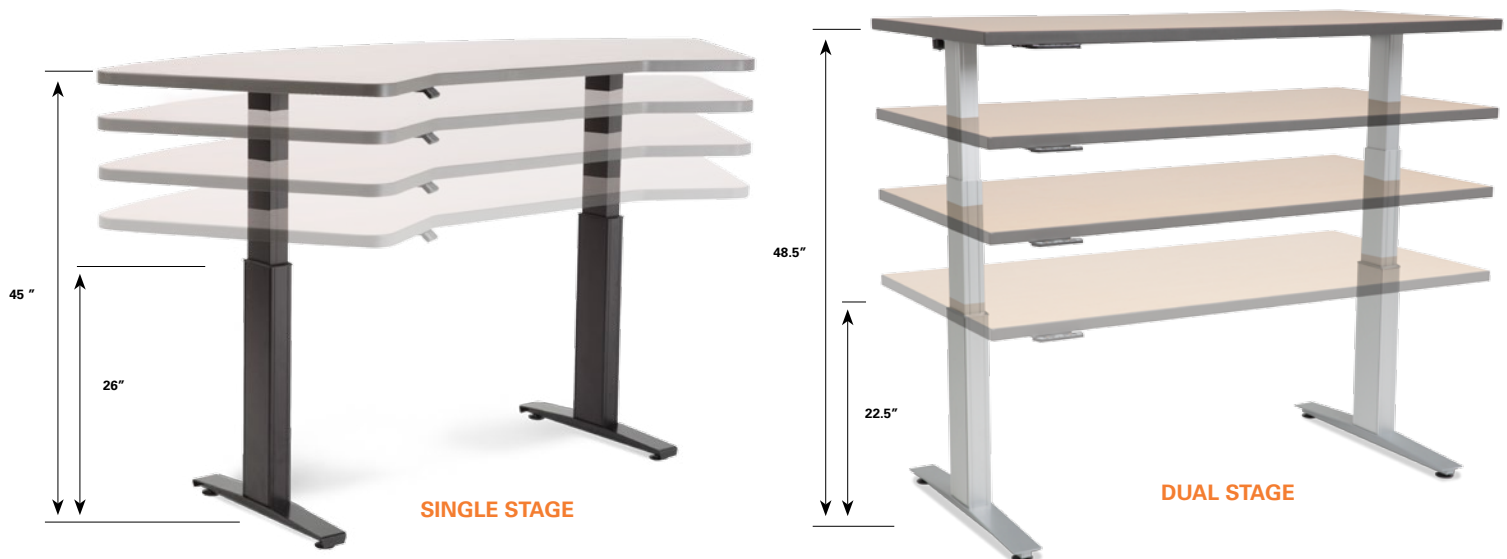
A strong contributor to environmental sustainability, anodizing can also help products qualify for LEED points in addition its superior recyclability and reusability.



LEGS and ACTUATION

Single- and dual-stage electric actuation is available to meet a wide variety of adjustment ranges.

All SHIFT systems have been tested and exceed BIFMA requirements



* Dive-mounted feet can lower start height by 1.5" in order to meet ANSI/HFES requirements.
 ** Height is measured from the floor to the bottom of the work surface.

ACTUATION	Single-Stage Electric	Dual-Stage Electric
COLUMN DIMENSION	2.6" X 4.9"	2.6" X 4.9"
SPEED	1.5" per sec.	1.5" per sec.
STROKE	19"	26"
INSTALL HEIGHT	26" Standard Mount 24.7" Dive Mount	22.5" Standard Mount 21.2" Dive Mount
GLIDE ADJUSTMENT	0.5"	0.5"
NOISE LEVEL	<50 db	<50 db
COLOR	Black or Silver Anodized	Black or Silver Anodized
LOAD CAPACITY	176 lbs. per leg (dynamic) 292 lbs. per leg (static)	176 lbs. per leg (dynamic) 292 lbs. per leg (static)
DUTY CYCLE	2 min. on/18 min. off	2 min. on/18 min. off
ANTI-COLLISION CONTROL	ISP (Intelligent System Protection)	ISP (Intelligent System Protection)
HAND CONTROLS	Simple Switch (up/down) Optional display handset w/ memory	Simple Switch (up/down) Optional display handset w/ memory